

CEEC Truck Mounted Crane

User's Manual



HUBEI CEEC TRUCKS CO., LIMITED

<http://www.cectrucks.com/>

Email: info@cectrucks.com tom@cectrucks.com

Preface

Thank you for purchasing CEEC products. For better using your ISUZU truck mounted crane, get the best operating performance, we strongly suggest that before the operation process you could read this manual instructions carefully, and to manipulate the program handily.

The manual detailed describes the performance of car cranes, structure, usage, precautions and maintenance of such knowledge. While showing details of the truck, both pictures and description will together help you get better understanding of how to use truck. Before the operation, the skilled operator should carefully read the contents of the manual.

After master the truck performance characteristics, methods of operation and precautions, then could start to operate this crane truck. In order to ensure the staff turnover after the operation, and properly use of the truck. This manual book must be properly kept, shall not be lost and damage.

CEEC TRUCKS

---CEEC TRUCKS

Whatsapp: +86 136 4729 9000
+86 159 7192 0800

Contents

Chapter 1. General Description.....	4
Chapter 2, Main Technical Data.....	5
Chapter 3, Truck Mounted Crane Structure Components.....	6
Chapter 4, Truck Mounted Crane Working Principles.....	8
i ,How are the crane trucks working?	8
ii ,What is the main component for truck?	8
iii, How to operate fuel bowser? (Very Important)	9
Chapter 5, Others for Attention.....	10
i ,Precautions for Use.....	10
ii ,Maintenance.....	11

Whatsapp: +86 136 4729 9000
 +86 159 7192 0800

Chapter 1. General Description

CEEC TRUCKS Truck Mounted Crane based on type II ISUZU 4*2 Left Hand Drive chassis, equipped with Palfinger brand 10Tons boom crane, the crane model is SPS25000, and the crane truck mainly used for heavy duty thing loading and transportation, and the working aerial can be city street, factory, desert areas and other areas of need.

The vehicle designed to fully rely on the advantages of the original of ISUZU brand chassis, fully consider the product's convenience and reliability, also the chassis ISUZU technology features. The crane is Austria brand Palfinger SPS25000 model, with loading capacity can be up to 10Tons. As for cargo body, which is newly designed and called "Cold Riveting" technology, we use one-shot steel plate to be riveted on strength auxiliary frame. Inside of cargo body floor decorated with wooden, and can make goods safety during transportation.

The ISUZU 4x2 Truck Mounted Crane equipped with telescopic boom crane, hydraulic support legs, and steel cargo body. Cab for the single-row Comfortable seat, nice driving feeling. Therefore, the vehicle is an ideal Mounted Crane Truck mainly for Civic Utility.



(Preview for your ISUZU 16CBM Fuel Tanker Truck)

Chapter 2, Main Technical Data

Basic parameter:

Items		10Tons ISUZU Truck Mounted Crane
S I Z E	Outer Dimension (L×W×H) (mm)	8900*2500*3500
	Wheelbase (mm)	4500
Kerb Weight (kg)		8600
G E A R	Gearbox brand	ISUZU MLD
	Model	6-shift gearbox
	Type	Manual
Cab capacity (includes driver)		2
E N G I N	Brand	ISUZU
	Model	4HK1-TC50
	Type	Four cylinder inline, four stroke, water-cool, turbocharged Inter-cooling, diesel
	Rating Power (kW/HP)	151 / 205

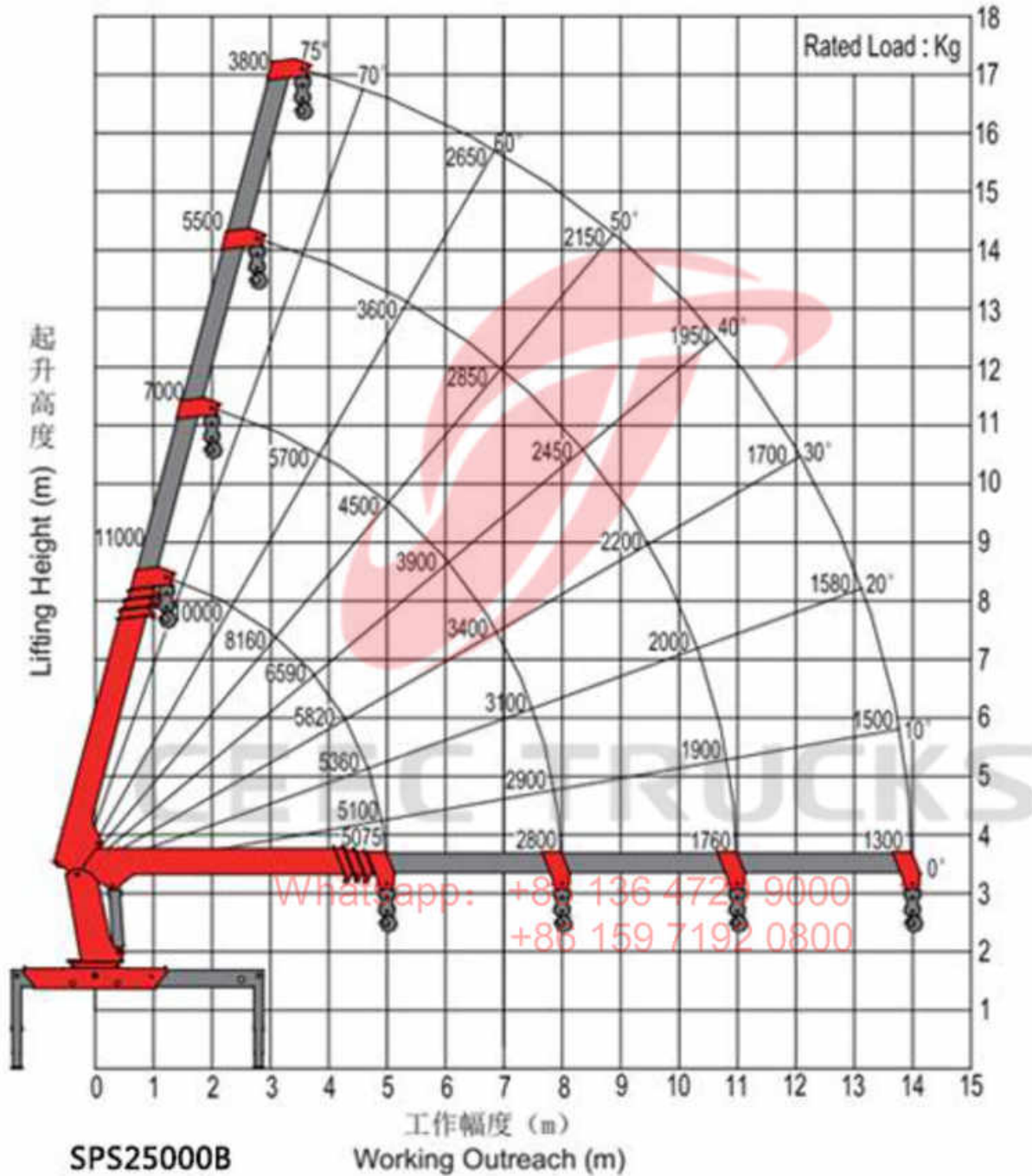
Note: 1. We keep the right to revise the parameters on the list above.

Water Tanker basic parameter list

Items		Parameter
Crane	Capacity (kgs)	10000
	Boom Type	Telescopic boom crane SPS25000
	Lifting Height	16.3 m
	Boom Length	4.5 m
	Working Radius	14.3 m
	Slewing Angle	360° all rotation
	Control	Hydraulic control
	Brand	Palfinger
Cargo Body	Material	Carbon Steel and Wood
	Building Mode	Cold Riveting
	Painting	White

Chapter 3, Truck Mounted Crane Structure Components

Overview for Palfinger boom crane technical drawing:



Above drawing show the working chart for Austria brand Palfinger SPS25000 boom crane, which has working radius 14.3, and lifting height 16.3m.



Palfinger SPS25000
10tons crane

ISUZU truck chassis

Cargo body

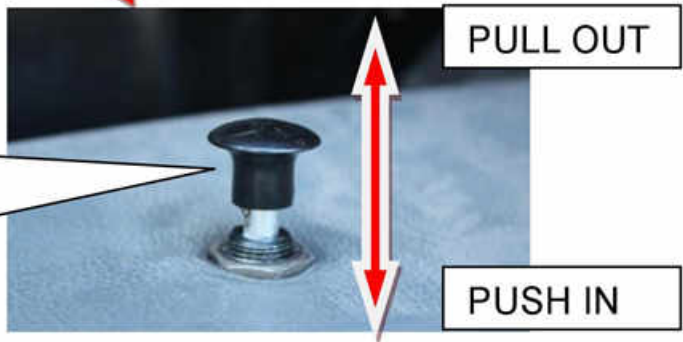


Driver cabin

PTO switch button

Whatsapp: +86 138 4729 0000
+86 159 7192 0000

PTO switch button working model:
PULL OUT: PTO start working and
can operate the crane
PUSH IN: PTO stop working and
cannot operate the crane



PULL OUT

PUSH IN

Chapter 4, Truck Mounted Crane Working Principles

The operator should fully understand Whole Structure and Working Principle for ISUZU Crane Truck before any operation. Only trained person can operate this vehicle properly and to prevent unnecessary accidents and equipment damage.

i ,How are the crane trucks working?

The ISUZU Truck Mounted Crane makes use of the special power take off (PTO) to get power from the engine, and then transfer the power to the Gear Pump and via hydraulic pipelines to make hydraulic cylinder moving, then can make the crane working. Turn on / off valves and operate the joysticks through the regulated program, the boom crane can working as wanted and then come to all function.

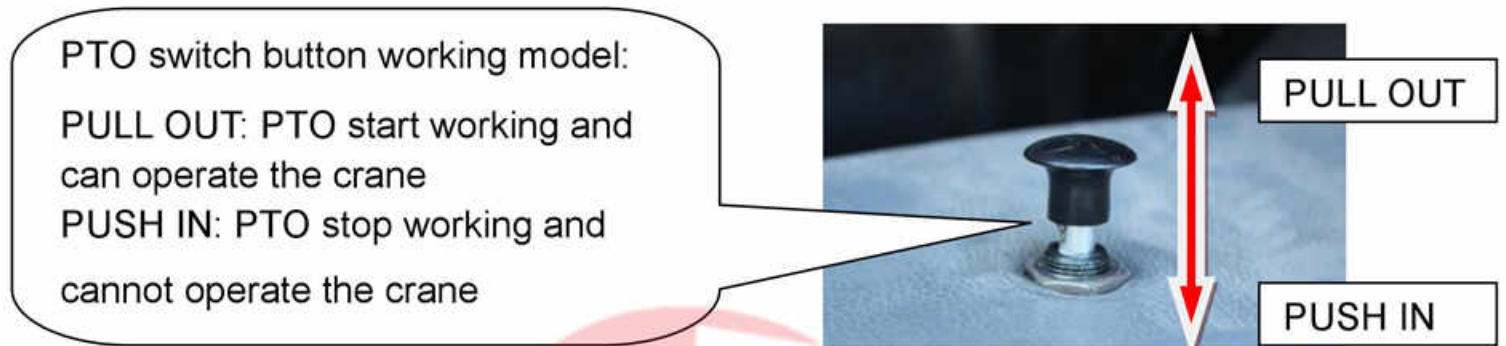
ii ,What is the main component for truck?

The truck mounted crane is refitted based on the ISUZU 4x2 LHD chassis. The refit part includes telescopic boom crane assembly, actuator device, pipeline system and operation system

- *Telescopic boom crane assembly: Austria brand SPS 25000 Palfinger 10Tons crane, which is used to goods loading and transportation.*
- *Actuator device: includes power take off, gear pump, etc., which can pass the power from the chassis to the pump.*
- *Pipeline system helps come to all special functions.*
- *Operation system: helps come to all special functions' convert.*

iii, How to operate fuel bowser? **(Very Important)**

1. Refer to Chapter 3 and get more information about valves structure component.



**Please Note: When PTO button is PULL OUT position, the Crane starts working;
When PTO button is PUSH IN position, the Crane stop working**

2. Carefully refer to the attached Detailed SPS25000 Operator Manual Hydraulic Crane to know how to use the cranes

CEEC TRUCKS

Whatsapp: +86 136 4729 9000
+86 159 7192 0800

Chapter 5, Others for Attention

After carefully reading the above information, you must be well known how to use the ISUZU Truck Mounted Crane; below show some parts you need to pay attention while using the truck.

i ,Precautions for Use

- Please abide strictly by the following manual:
 1. *Truck Mounted Crane Owner's Manual*
 2. *Operator Manual Hydraulic Crane SPS25000*
 3. *SPS25000 Parts List Manual*

- Carefully examination the crane truck:
 1. Examine all parts, especially steering device, braking device, Suspension, tires and other joints, etc.
 2. Examine Exhaust Braking System, maintenance if necessary.
 3. Examine the tire pressure.
 4. Examine all lights on the truck, including Head Light, Fog Light, Turning Light, Tail Light.

- It is strictly forbidden to operate the Power Take Off (PTO) under the condition of the clutch not separation (Not step the clutch pedal). When release the clutch, you should slowly. The operation of the PTO must only on the condition of neutral for clutch.

- It is better not to do Half-Load transportation, especially for long-distance transport.

- When operating all the Valves and Joysticks, it is not good to overexert, for overexert will influence the Joysticks service life.

ii, Maintenance

- The maintenance of the chassis including clutch and transmission gearbox should be properly.
- 4. The Maintenance of the boom crane refers to the “Operator Manual Hydraulic Crane SPS25000” and “SPS25000 Parts List Manual”.
- It should be checked all coupling and lubrication at fixed period to exclude the tight parts, and make sure all parts in good lubrication condition.
- Both the Gear Pump, PTO, Transmission Gearbox should be carefully washed, checked and maintenance every year.
- The filter should be washed frequently. Exchange it if necessary.



CEEC TRUCKS

Whatsapp: +86 136 4729 9000
+86 159 7192 0800